



RICHMOND HIGH SCHOOL *Alumni Association*

380 Hub Etchison Parkway
Richmond, Indiana 47374

Home of the Richmond
Red Devils
Richmond, Indiana

*Fall 2014 Edition
Vol. XXXXIII*

Find us @ www.rhsalum.org
and on Facebook



how did we get this way ?

**A look at our traditions,
history
& just some plain old folklore.**



Remember the bridge at Glen Miller?

The picture at the left is from the refurbished bridge in Glen Miller park at the pond looking to the south.

The photo was taken by Dean Stephens, Class of 1978. The park has seen many renovations of late, bringing back its sparkle. It is under the supervision of RHS alumni Bill Thistlethwaite, ? and his crew.

This summer it has hosted Kid Fest, Movies in the Glen on Saturdays, Kidsart, concerts, Fire on the Water and other free events.



20 Years for the Memorial Brick Patio

In 1994, the newly formed RHS Alumni office decided to create a brick patio in front of RHS. It was dedicated in 1995 and has become a part of the campus.

In recent years it has become a site for reunions to gather and remember deceased members of their class before touring the school. Since its creation more than 800 bricks have been placed in the patio.

The RHS Alumni Association will rededicate this patio in 2015 by enhancing the landscaping, adding some roses and mulch and perhaps even adding more to the brick area for the future.

The patio holds bricks in remembrance of alumni, teachers, coaches, staff members, spouses, children, reunion committees, Distinguished Alumni, former RHSAA Board members, and residents of Richmond.

Anyone, alumni or non alumni, living or deceased, can be honored at the patio.

The current design of the patio is in a "T" which is hard to mow for the school grounds crew. We hope to make a large circle around the patio and fill it with knock-out red rose bushes and mulch to make it easier to mow around while making it even more special.

We encourage you to purchase a brick for this celebration.

The cost is the same as 20 years ago: \$65.00. Dwyer Monument creates the bricks for us. (Martha Feltis Dwyer '36 & Bill Dwyer, '65, both of Richmond.)

If you have never ordered a brick, consider this now. If you have placed a brick in the past, do it again.

The form is on the adjoining page with the most recent orders since our last magazine. We will take orders for the bricks from March, 2014 to March, 2015 for the rededication.

The proceeds from the sale of the bricks benefit the office fund.

The Memorial Bricks

The following bricks have been purchased since the last fall Register magazine. They will be placed in the patio in August by the custodial staff at RHS for the alumni office.

**PHIL & MILLIE
DICKMAN
1982 & 1984**

*This brick was purchased by
Phil and Millie Dickman*

**HENRY JOHN
DICKMAN
2013**

*This brick was purchased by
Phil and Millie Dickman
Classes of 1982 and 1984*

**MAX WAYNE
EVANS
CLASS OF 1953**

*This brick was purchased by
Max Evans, '53
Overland Park, KS*

**DAVID NIXON
CLASS OF 1958**

*This brick was purchased by
David Nixon, '58
Centerville, IN*

**FRED CROCKETT
WWII VET 1941
PURPLE HEART**

*This brick was purchased by
Larry Crockett, '50
Ann Arbor MI*

**BARBARA ANN
SHAWHAN GIBBS
CLASS OF 1956**

*This brick was purchased by
Barbara Harper '56
Richmond IN 47374*

**IN MEMORY OF
GEORGE ELLIS
CLASS OF 1961**

*This brick was purchased by
Michael Mercurio Ellis '57
Coldspring TX*

**THE
CLASS OF
1959**

*This brick was purchased by the
Class of 1959*

**THIS COULD
BE YOUR
BRICK!**

*Order your memorial brick any
time of the year.*

**IN MEMORY OF
RAY ZALESKI SR
A LIFETIME FAN**

*This brick was purchased by Lynn
Zaleski Miller, '76
Richmond IN*

**WAGERS FAMILY
1963- 1967-1969
1970-1973-1974**

*This brick was purchased by
Carol Wagers Creech, '69,
Plano TX*

**WICKEY CREECH
CAROL WAGERS
CREECH 68 & 69**

*This brick was purchased by
Carol Wagers Creech, '69,
Plano TX*

The Memorial Bricks

To order a brick, simply complete this form and return it to us. We will do the rest!
 Mail to: RHS Alumni, 380 Hub Etchison Parkway, Richmond IN 47374. Call us at 765-973-3338. If your order is for recognition of someone's birthday, anniversary, graduation or death, please let us know and we will send a letter of acknowledgement to that person.

Brick Order Form

____ Yes, I would like to order a memorial brick(s) for the patio at \$65.00 each. (Call us at 765-973-3338 for questions.)

My name is _____ Class _____ E-mail _____

Address: _____

The brick should read as follows (14 spaces per line including blanks, up to 3 lines per brick)

Please charge my __ Visa __ Master Card _____
(card number) (expire date) (signature)

The Alumni Directories that Never were Printed

In 2011, we signed a contract with a company, Alumni Research of Holiday Florida, to produce an alumni directory.

Previously we had worked with Harris Direct but at that time they did not want to produce a printed version as they had done for us in 2000 and 2006.

After researching the references and providing the necessary information, pictures and stories for the book by the contract deadline of Sept 1st, 2012, we waited in anticipation for the directories to come.

But we have waited for more than 2 years and nothing was printed. We have had numerous phone calls from alumni around the country who sent in money in good faith to the company.

Our only hope has been to work with the Attorney General's office in Florida who is investigating this. If you paid for a directory and have not been sent a form letter to send to the AG's office, please contact the alumni office by email, phone or mail.

We apologize for this company's performance.

At this time, we are unsure if the funds you sent will be recovered.

All we know is that it has been a mess, we are sorry and greatly disappointed.

The RHS Alumni office

For the next issue:

Tell us about your favorite teacher. We want to know about the person that most affected your life. Who was that special someone that went the extra mile or said something to you that changed your life?



The class of 1994 held a memorial balloon release as part of their class reunion at the Brick patio this summer.

The Alumni Office

Officers			
President Sharon Sanders	1963	Vice Pres Nancy Wright Manning	1965
Treasurer John L Hitch	1956	Secretary Sandra Wiles Gore	1957
Scholarship Chair Carol Owen-Clark	1978	Special Events Chair Bonnie Godsey McClain	1960
Members of the Board			
Joyce Hill Owen	1955	Nancy Van Etten Cox	1956
Doug Oler	1958	Sandie Rans Rowe	1964
Debbie Hardman Ninde	1969	Aleasia White Stewart	1972
David Brumfield	1973	Pam Lawrence Hagy	1976
Sherri Dillon Bergum	1988	Executive Director Mary Lou Griffey	

Our Mission Statement
"To be an economic leader in our community, state, and nation, we must first be a leader in the education of our children."

From the Director's Desk

Remember the song from "Yentl" called "Traditions!"? How do we come to have ours at RHS? And what about those things that remind us of our high school days?

In this issue we are offering tidbits of facts, traditions and just plain ole stories. Our high school years bring back smiles of the silly things we did but also smiles of pride in the being a part the right of passage from freshman to senior.

Enjoy the ride back down memory lane.

And get a song in your heart. Music is alive and well in Richmond. Please take a look at the fun at the Starr Gen-nett Walk of Fame and the Richmond Music Festival.

Sincerely, Mary Lou Griffey, Executive Director.

Membership / Scholarship Form

If you have enjoyed this magazine, please consider becoming a member of the third oldest alumni association in the nation. *Your donation is tax deductible ~ we are a 501 C 3. Complete this form or go online at www.rcs.k12.in.us/alumni and download the form.*

Return to: RHSAA, 380 Hub Etchison Parkway, Richmond IN 47374

Membership \$25 \$40 \$50 \$75 \$100

Office Fund \$_____ any amount you would like to contribute to help is appreciated and tax deductible.

Please accept my donation to the RCIP (Richmond College Incentive Program) Scholarship fund as listed below:

Scholarship \$25 \$40 \$50 \$75 Other

First Name Maiden Last Class Year

Spouse Name Spouse Class Yr Telephone e-mail

Address City State Zip Code

Please charge my membership/scholarship donations to my charge card

Visa MC My # _____ Exp _____ Sign _____

Our 2014 Distinguished Alumni

An outstanding example of personal career success, a benefactor to his home community and a benefactor to Richmond High School, Bill Mercurio has the credentials to be Distinguished.

Bill Mercurio, Class of 1958 Beavercreek OH

C W “Bill” Mercurio found high school a place to learn and develop personal skills. He was active in Hi-Y, Boys Bowling, the Hot Rod Club, Hunting & Fishing Club, and the Academic Bible club. He acted in the Senior Dramatics club.

He has maintained a close circle of friends from his high school years. An active member of the class of 1958, he was instrumental in the fund raising for the development of the RHS Alumni Web site in 2013.

Along with his brothers Benny and Alan, the three Mercurio brothers were one of the first to “give back” to RHS by funding a \$50,000.00 donation to the RHSAA Scholarship program in its infancy.

His giving has not stopped with RHS. His giving includes several donations to the educational programs at Beavercreek OH where he and his wife Elaine live and where he raised his four children. He relayed to Sierra Moore, in 2008, a member of Jeremy Hill’s Honor’s English class that “you must respect your education in order to have the commitment to succeed.”

After graduating high school, Bill earned a degree in Industrial Management from Purdue. He served four years in the US Navy graduating from Officers Candidate School.

His current position is that of President / CEO of Plastic Trim, Inc. which is a leading manufacturer of exterior trim for vehicles for Chrysler, Ford and GM. Products include glass reveal moldings around windshields and moldings around glass and the body. The company is located in Beavercreek, Ohio with the sales and engineering offices in Southfield, Michigan. Incorporated in 1990, with sales of nearly \$68 million in 2007, the company has been the recipient of many awards.

Mercurio serves as a member of the Beavercreek Chamber of Commerce board, the Beavercreek School Facility Steering Committee, People Representing Interest in Developing Education (PRIDE) which is a group of concerned Beavercreek citizens working towards improving the educational system at Beavercreek.

Bill is a member of the Business and Community Leaders Roundtable and a member of the University Of Dayton School Of Engineering Advisory Council. He has been awarded the Business Person of the Year award by the Beavercreek Chamber of Commerce and was the Dayton Business Reporter’s Business Executive of the Year for the Miami Valley.

In 2002, Mercurio received the Outstanding Engineer and Science Award by the Affiliate Societies Council of Engineering and Science Foundation. He and his wife received the Outstanding Community Service Award from the Beavercreek Rotary Club for their “giving back” to their community.



When asked about his continued support of RHSAA and Richmond High School, Bill commented that though he has had much success in his field of engineering and owning his own business, he attributes his high school for giving him not only a technical education but a social one as well.

“It has been my social abilities that have allowed me to further my self and become successful, if I have any success, that have made the difference. I give credit to my teachers and school life at RHS for that.”

Bill was recognized by his classmate, Stephen Warner of West Palm Beach, FL at the May 9th Academic Excellent program at Civic Hall.

A reception for his family, friends and classmates was held prior to the ceremony at Forest Hills Country Club with about forty in attendance.

Mercurio was selected by the RHSAA board in January as the 2014 Distinguished Alumni.

If you would like to nominate someone for the 2015 Distinguished Alumni, contact the alumni office at 765-973-3338 or email at mgriffey@rcs.k12.in.us.

Guest Article

One of our traditions is explained by our contributing editor,
Mary Ellen Cordell Donat
Class of '70

Gift of Song from the Class of '40

It's long been a tradition for senior classes to leave some memento to their high schools before graduation. Most tributes are tangible and carry some evidence of the honoring class. The Richmond High School senior class of 1940, however, anonymously left their alma mater a gift that can't be seen or touched, but is certainly felt.

Their endowment is singularly recognized as the spirit of RHS:

"We're loyal to you, Richmond High!
We're red and we're white Richmond High!
We'll back you to stand
'gainst the best in the land,
for we know you have sand, Richmond High!
Rah! Rah!
So pass 'round that ball, Richmond High!
We're backing you all, Richmond High!
Our team is our fame protector,
on boys, for we expect a victory from you, Richmond High!"

The RHS Fight Song was written in the fall of 1939. Richmond High School was brand new that year. Most students came from the town's former high school, Morton. To them, anything other than "Block M" sounded funny. Students needed something that would turn Morton enthusiasm to Richmond High School devotion.

Block R's faculty advisor, Mr. McNaughton, recognized the need for a new rallying focus and presented the idea for a school song to Block R president Audrey Lindstrom and head yell leader Keith Gabbard. (In those days, Block R chose yell leaders – three boys – who cheered during basketball games only.)

Accompanied by faculty advisors, Keith, Audrey and fellow seniors Jo Ellen Rodefied, Harry Ford and Carl Runnells wrote the song. The group met in the upper northeast corner of Civic Hall several afternoons after school and set their words to the tune of "Illinois Loyalty."

In recent years, "team" has replaced "boys" in the song's last line, evidence that the gift of the class of '40 endures.

Rewritten from a Richmond Remembers column written by Mary Ellen Donat; published in the Palladium-Item March 9, 1987.

Fascinating Facts about RHS, Richmond and Indiana

On the Banks of the Wabash—Indiana State Song— written by Paul Dresser of Terre Haute

In 1931 the Tulip Tree was designated the state tree. It is also known as the yellow poplar.

The first commercial brewery in Indiana was established in Richmond in 1827 by Ezra Boswell of London who located here. Beer sold for 12 1/2 cents a quart.

Solomon Dickerson of Richmond developed the first cooking stove on May 26, 1835.

In 1957 the Peony was designated the state flower.

The Indiana State Flag was first recognized in 1917, the centennial of the state.

In 1830, John Finley of Richmond wrote "The Hoosier's Nest" which is credited with Indiana's nickname. Also from John Hoosier who was a barn builder and worked on the canal late— high quality workers of self-reliance.

How did We Come up with That?

Did you ever wonder where the saying started or what was the origin of a word? Well, here are some tidbits I have collected over the last ten years that might be fun to know and share with others.

The Peace Sign

According to Wikipedia, the peace sign was designed by British native Gerald Holtom as a symbol against nuclear war in 1958. by using directional lines that were used by ship signal flags, spelling the letters DAC (Direct Action Committee Against Nuclear War) It came to the US in the 1960's as a symbol for the peace movement. Today, kids wear tie-dyed tee shirts with the peace symbol and display it on jewelry, bedspreads and key chains.

Earmarked

The term came to us from early settlers. They had to let their livestock run free in the forest as there were no fences and they just roamed the woods to find food. To keep track of who's pig it was, the settler would cut notches in the pig's ear or the cow's ear and even did this on horses. It was an early form of branding. Today, some pork farmers still cut notches in the ears of sows and their litters to track blood lines on brood stock.

(from the Natural Heritage of Indiana by Marion T Jackson, Indiana University Press, page 374)

Republican

This was a term that pioneers used to refer to the projecting roots from a tree that they were trying to remove. It was particularly hard to get the stubborn root out, it was said to be a "republican." So a republican meant you were stubborn and practically immovable.

(from the Natural Heritage of Indiana by Marion T Jackson, Indiana University Press, page 374)

Democrat

Original referred to a type of horse-drawn wagon that was high, lightweight and usually had two seats. It became a political term first used in France and adopted in the US in the 1800's to refer to the politics of an equal and people driven government.

(Wikipedia)

Teenagers

The term "teenager" did not exist before WWII. It was used to identify boys who were too young to enlist or be drafted. So if you were under eighteen, then you were a teenager.

Mind your P's & Q's

When a barkeep in London gave an ale to a customer, it was given in two sizes; a pint or a quart. If someone was getting drunk and not behaving, they were told to "mind their P's & Q's" Pints and Quarts.

Firsts for Richmond

Did you know that the first commercial brewery in Indiana began in Richmond? In 1816 Ezra Boswell of London came to Richmond. In 1827 he established his brewery selling beer for 12 1/2 cents a quart.

State Signs and Symbols

1913—"On the Banks of the Walbash, Far Away" was written by Paul Dresser in 1897 and was one of the most popular sheet music sales of the time. It was chosen as the State Song in 1913 by the General Assembly. Other selections by the General Assembly include the following:

1917– The State Flag was chosen on the centennial of the settlement of the State.

1931– The Tulip or Yellow Poplar was chosen as the State Tree

1933– The Cardinal was chosen as the State bird.

1957– The peony was chosen as the State flower.

Hoosier

In 1830, John Finley of Richmond wrote the poem, "The Hoosiers Nest". The term Hoosier became the state nickname (date unknown). There are many claims as to how it got started but the best known is that it referred to "bravery and self-reliance" exhibited by the employees of John Hoosier, a man who hired the sturdiest to first build barns and later help build the canals. A third source claims it was used to refer to a "red neck" rough and tough uneducated native of the area.

Hoosier Cabinets

Popular at the turn of the century, it was an oak and metal cabinet manufactured in New Castle and sold in Richmond that was made in three parts: upper cabinets, lower cabinets on castors, and a slide out shelf between.

In Memory Of....

The following deaths have been reported to our office since our last newsletter. If you know of an alumna who has died, please contact us at mgriffey@res.k12.in.us or by mail at RHS Alumni Association, 380 Hub Etchison Parkway, Richmond IN 47374.

Morton High School Obituaries

- 1928 **Gladys M Wood Roberts**
7/13/14 *Richmond IN*
- 1933 **Mary Carolyn Rohe Kinyon**
1/20/14 *West Lafayette IN*
- 1934 **Eugenia Mathew
Kleinknecht**
5/30/14 *Richmond IN*
- 1936 **Agnes Lawall Moon**
June 2014—Unknown
- 1938 **Mary King McWhinney**
3/09/14 *Indianapolis IN*

Richmond High School Obituaries

- 1940 **Cathryn Clenents Cowles**
3/22/14 *Medina WA*
- 1940 **Mary Kennedy Brady**
6/26/14 *Rsukin FL*
- 1942 **Marilyn Kreigbaum
Narcowich**
3/15/14 *Altadena CA*
- 1942 **Phyllis Miller Armstrong**
3/3/114 *North Salem IN*
- 1944 **John J Bahlman**
6/15/14 *Albuquerque NM*
- 1946 **Helen Pappin Smarelli**
4/27/14 *Richmond IN*
- 1946 **Phyllis Saul Pyle**
4/18/14 *Richmond IN*
- 1947 **Robert L Chandler**
6/08/14 *Fort Wayne IN*
- 1947 **Howard "Jack" Elstro**
7/03/14 *Richmond IN*
- 1948 **Barbara Ayers Anderson**
4/20/14 *Richmond IN*

Richmond High School Obituaries

- 1948 **Jean Prosser Yaeger**
10/19/13 *Bloomfield CT*
- 1949 **Theresa Caldwell Lakes**
6/13/14 *Richmond IN*
- 1949 **Jo Mitrione Thomas**
4/24/14 *Richmond IN*
- 1949 **Robert Coons**
5/21/14 *Richmond IN*
- 1949 **Tom Izod**
5/20/14 *Richmond IN*
- 1949 **Richard Ludwig**
5/01/14 *Richmond IN*
- 1949 **Richard Therrian**
4/24/14 *Noblesville IN*
- 1949 **Betty Ridge Martin**
7/06/14 *New Paris OH*
- 1949 **Janet Shepman Beck**
7/28/14 *Richmond IN*
- 1949 **Ruth Thornburg
McConnell**
9/09/14 *Springfield IL*
- 1949 **Suzanne Beeson Hymer**
9/08/14 *Richmond IN*
- 1950 **Donald Sharp**
5/15/14 *Indianapolis IN*
- 1950 **Leland F Cox Jr**
3/15/14 *Richmond IN*
- 1951 **Dale M Wilson**
4/29/14 *Mechanicsburg VA*
- 1954 **Sue Smith Quigg**
7/10/14
- 1955 **George R Bouse Jr**
5/02/14 *Richmond IN*
- 1956 **Shirley Ann Barth Barton**
8/22/14 *Boynton Beach FL*

Richmond High School Obituaries

- 1956 **Walter Werner**
8/22/13 *Richmond IN*
- 1958 **Melvin J Hartman**
6/29/14 *Richmond IN*
- 1958 **Sandra Williams Powell**
6/20/14 *Jasper IN*
- 1958 **H Kenneth Flood**
5/01/14 *Fort Wayne IN*
- 1958 **William L Campbell**
7/26/14 *Richmond IN*
- 1959 **Sandra Henemyre Causey**
12/21/10 *Richmond KY*
- 1959 **Richard Smith**
1/01/14 *Rihcmond IN*
- 1960 **Earl Starr**
3/14/14 *Indianapolis IN*
- 1964 **Gary Dean Petty**
6/29/14 *Centerville IN*
- 1968 **Joseph C Hair**
7/10/14 *Richmond IN*
- 1968 **Linda Jo Levy Graham**
3/18/14 *Richmond IN*
- 1969 **Ronald Putterbaugh**
8/6/14 *Bloomington IN*
- 1970 **Janie Slaven Brock**
5/30/14 *Centerville IN*
- 1971 **Jane Jeffers Mendenhall**
6/30/14 *Richmond IN*
- 1972 **Michael J Null**
7/28/14 *Richmond IN*
- 1984 **Kelly Miller Mooney**
7/06/14 *Richmond IN*
- 1984 **Jeffrey L Hargrove**
5/04/14 *Richmond IN*
- 1986 **Lance G Powell**



How We are Changing

Wayne County and Richmond are reshaping themselves since the second Great Depression. Lets take a look at what we have to offer.

By the Numbers

Census figures can tell us how we are changing.

The average household income in 2000 in Wayne County was \$35,278.00. In 2011 it was \$38,830. 00. The average income for men in 2000 was \$30, 250.00 while woman averaged only \$18, 036.00. Of the roughly 37,013 county residents in 2013, 21,385 were tax payers with 91% white, 5 % African American, 3% Hispanic and 1% other. Eighty-three percent 18 and older have a high school education with 17% having a BA or higher. There is a large community of Veterans numbering 5,894 currently. Twenty per cent of our community live below the poverty level.

The average home value rose 8.6% in 2013 to \$81,700. Median Rent for all of the county is \$500 per month.

Population growth was down overall with the following communities seeing changes:

Town	Began	2000 # Residents	2013 # Residents
Cambridge City	1836	2,135	1,863
Centerville	1811	2,476	2,541
Fountain City	1834	723	792
Greens Fork	1818	384	422
Hagerstown	1832	1,782	1,780
Milton	1824	629	489
Pershing/ East Germantown	1827	229	409
Richmond	1806	39,138	37,013

from the US Census, Wikipedia, Waynet.org, Lingle Real Estate and Morrisson Reeves Library)

Some RHS alumni who are empty nesters have been relocating back to Richmond. Besides coming home to friends and family, they come to an excellent new hospital and medical care network, outstanding infrastructure of parks, roads and greenways, entertainment here in the county and within a sixty-mile radius, and an offering of the arts found in cities much larger than us.

Our Veterans

Did you know that as of 2010, 3% of all homeless people in the nation are veterans of the Iraq and Afghanistan wars? Twenty per cent of all homeless adults have served in the military. Of the adult men who are homeless, 33% have served. More than 56,000 veterans are released from prison each year and many become homeless. *(from the American Legion Magazine, August 2010 edition)*

Misc Facts and Figures

Thirty-five per cent of the gross national product was spent by the US government through employment and contracts in the 1970's. It was a time of rebuilding for the country and the towns and cities applied for federal aid for the first time.

First School breakfasts were served at Nicholson School in 1967. Esther Jones was the first principal at Joseph Moore School. Beatrice Holland was Richmond's first black teacher.

In 1902 flower seeds were distributed to students in Richmond and prizes were awarded in the fall for cut flowers shown in exhibit. The Aftermath Society (begun in 1890's) provided the seeds to encourage beautification of the yards in town.

Jan, 1904– the Art Association (now RAM) encouraged photos to be taken of parks and local buildings as photography became popular with private citizens.

Rudy the Imp was created in 1940 by Harry X Ford, '40 and Harlow Haas, '40 for the "B" team in basketball. It was displayed in artwork in Social Hall on the bulletin board and reappeared on page 149 in the 1963 yearbook.

The Pennsylvania Depot

One of our most notable landmarks has been restored thanks primarily to the efforts of alumna Roger Reichert, '78. This fall the long-idle building will open with a new life.

The Union Depot Came First

The first train depot in Richmond was the Union Depot, which sat just west of the present site of the Pennsylvania Depot. The first locomotive came to Richmond in 1853. By 1871 citizens decided to build a new depot and razed the Union and began working on land donated by the Starr Family.

During the Civil War, the Depot was a gathering site for regiments of men from Wayne County to report to Indianapolis to Camp Morton. Many supplies of firewood, food and clothing that were donated by the citizens of Richmond traveled to the Camp too.

The body of President Lincoln traveled through Richmond en route from Washington DC to Springfield Illinois in 1864. Governor Oliver P Morton (born in Centerville and namesake for Morton High School) and Col Solomon Meredith (of Cambridge City) accompanied the body. US Congressman George Julian of Centerville was to also be in the group but elected to stay in Washington DC as he was a major member of the War Department and felt he needed to be present at the meetings following the assassination.

“On Saturday, April 29th, 1864, at 11 o’clock at night, a funeral escort train from Indianapolis arrived here with all the state officials and many armed officers. Here it was joined by many citizens and proceeded to the State line, where it waited for the train carrying the body of the martyred President.

The funeral cortege reached Richmond at 2 o’clock, Sunday morning, when all the bells in town commenced to toll. Fully, 10,000 people were in the vicinity of the depot. At Fort Wayne Avenue, spanning the tracks, was an immense arch heavily draped, relieved by the national colors. Upon this arch, about eighteen feet above the ground, was a casket, by which stood a young lady impersonating the Genius of Liberty, weeping, accompanied by mourners from the army and navy.

As the train stopped a large wreath from the Richmond ladies, with the inscription “A Nation Mourns,” was sent to the car.

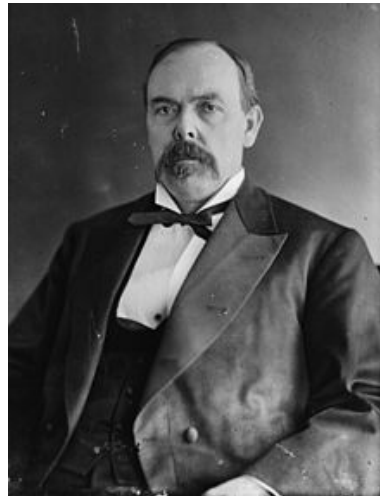
The entire train, cars, seats, curtains, blinds, all was of the deepest black, relieved here and there with silver rosettes.

After a half hour’s stay, the cortege left, while the bells still tolled and the Richmond Band played a dirge. It is said that the entire assembly was in tears– the most solemn scene ever witnessed in the city”

(From the Memoirs of Wayne County– Vol 1—by Henry Clay Fox—1912)

**“Down by the Station
Early in the Morning
See the little pufferbellies
All in a row
See the Station Master
Turn the little handle
Chug, chug, puff, puff
Off they go.....”**

Written by Lee Ricks and Slim Gaillard in 1948 and originally recorded by Tommy Dorsey. It is similar to the chorus of the French/ Canadian folk song Alouette.



**Oliver P
Morton
14th
Governor of
Indiana**

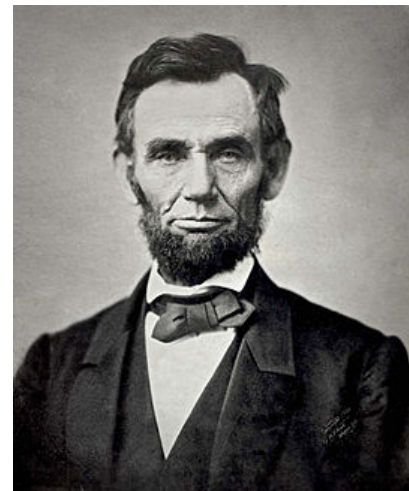
**(8/4/1823 ~
11/1/877)**

**Instrumental
in the
survival of
many Indiana
Civil War
troops.**

**Abraham
Lincoln
16th
President of
US**

**(2/12/1809 ~
4/15/1865)**

**Civil War
president
who helped
free the
Negro Slaves**



The Pennsylvania Depot

A reminder of the Glory Days of Richmond when Millionaires walked the Avenue, greeting nationally known figures at the local railroad station. Knowing its history, makes us value its presence.



Daniel Hudson Burnham (1846-1912)



Photo courtesy of Waynet.org

A Star of David embellishes the gable ends, perhaps in honor of Charles and Elizabeth Starr.



Photo courtesy of Morrisson Reeve Library

Governor Theodore Roosevelt of New York came to Richmond on October 11, 1900 as he campaigned for Vice President. More than 20,000 people assembled in Glen Miller Park on what now is called "Roosevelt Hill."

At the turn of the last century, Richmond's railroad traffic was at a new high. A larger, more stylish depot was built.

On December 5th, 1901, work began to raze the east end of the old Union Depot. Approximately \$105,000 to \$115,000 was spent on the station, sheds and tracks. The two-story brick structure designed by renowned Chicago architect, Daniel Burnham became a shining star of the north side of Richmond.

Burnham joined a Chicago architectural firm of Carter, Drake and Wright (Frank Lloyd Wright) in 1872. In 1873, Burnham and John Wellborn Root began their own firm. Their first major work was the ten-story Montajk Building build in 1882 which introduced the "floating raft" foundation which used reinforced concrete allowing the load of the building to be spread evenly over marshy soil.

In 1891 Root died and Burnham was named chairman of the Architectural Commission for the Columbian Exposition of 1893 in Chicago.

The land that the train depot occupied had been a marshy area belonging to the Starr family, donated to the city of Richmond for a train station site.

The Pennsylvania Depot is the last surviving example of Burnham's work in Indiana. The structure is an outstanding example of the turn-of-the-century Neoclassical architecture. It has a colossal portico with Ionic columns and with terra cotta bases and capitals.

The Pennsylvania Depot was completed in July, 1902 and opened to the public.

The manufacturing center of Richmond shipped products to and from factories. Starr shipped pianos, Hills shipped roses, and farmers shipped goods.

In its heyday between the two World Wars, 25 trains a day came to her doors.

Long goodbyes and sweet hellos echoed in the walls as soldiers left for war, caskets came home to rest and families gathered to greet the wounded.

From the Korean War, the Vietnam conflict, soldiers left for war and came home changed.

It was also the site for entertainers such as the Marx Brothers, artists such as Louis Armstrong, Duke Ellington, Jelly Roll Martin and Cole Porter to come to Richmond to record at Genett Records.

Presidents including Roosevelt, Truman and Eisenhower came here on their campaign trails.

The ticket office was maintained until November, 1972. By 1977, The Pennsylvania Depot, under the ownership of Consolidated Rail Corp (ConRail) closed the building. The downstairs was rented to a local auctioneer, Roy L Moore, first as a warehouse space and later as an auction site.

The Fight at the Depot

Two of Wayne County's most renowned men of the Civil War era clashed at the Depot. This was the culmination of years of political and ideological differences. From George W Julian by Grace Julian Clarke we have the family version of that rowe at the Depot



Col Solomon Meredith
(5/29/1810 ~ 10/02/1875)
From Cambridge City



US Representative George Washington Julian
(4/15/1846 ~ 3/02/1865)
From Centerville

In 1863, Col Solomon Meredith ran against US Representative George W Julian for US Representative and was unsuccessful. The two Quakers from Wayne County came to blows at the Depot. Below is the report of that encounter that blazed in the local and Cincinnati papers.

Nov 28, 1865- returning from shopping in Indianapolis while standing in the ladies waiting room of the Richmond railway station on his return to Centerville from a shopping expedition, his arms laden with parcels and wearing a shawl, he was assaulted by Solomon Meredith, a giant of six feet and four inches, who after felling him to the floor and beating him either with his fists, as he declared, or with a piece of metal according to Julian, proceeded to apply a rawhide. Meredith had first accosted him in a friendly tone asking if he had requested the agent of the 'Associated Press' to publish the news of his (Meredith's) having been relieved of his command at Paducah, KY. Julian replied in the negative, as he did to a similar query as to the editor of the *National Republican*, and supposed he had thus satisfied his questioner.

The blows that followed took him completely by surprise and of course at a disadvantage, for before there was any opportunity to defend himself, pinioned as he was by his shawl, he was down, and the affair was over.

Judge Nimrod H Johnson, Roswell Forkner, and others, made ineffectual efforts to interfere, but were beaten back by the six or eight bullies who had accompanied Meredith to assist if necessary in the task he had undertaken, and who formed a line between him and his victim on one side and the crowd in the station on the other, calling out, "Give it to him!" "Flog the damned Abolitionist!" "Hands off!" "Let them two fight it out!" etc.

Having accomplished their mission, Meredith and his coadjutors withdrew as suddenly as they had come upon the scene and Julian, bleeding profusely, was picked up and after his injuries had been attended to by a physician was taken in a carriage to his home.

Judge Johnson the next morning wrote an account of the affair to the Cincinnati *Gazette*, accompanied by a testimonial disavowing on behalf of the City of Richmond all responsibility for "the cowardly and brutal assault", signed by more than 50 of the most prominent residents, including Timothy Nicholson, Charles F. Coffin, Lewis D. Stubbs, David Nurdyke, Howell Grave, N. S. Leeds, William Bradbury and Stephen Stratton." (see Cincinnati *Gazette*, Dec. 1, 1865)

Meredith was a close friend of Gov. Morton, and even though the case of *Indiana vs. Meredith* for assault and battery dragged on for three years, nothing ever came of the matter.

The New Life of the Depot

For the first time in forty years, life will buzz again inside the Pennsylvania Depot. Plans for the Depot to reopen this fall, late winter are creating a new history for this majestic building.

By 1981, The Norfolk and Western Railroad had possession of the building. The railroad no longer wanted to maintain the empty building and planned to raze it. Local historians rallied to save the building in 1984.

The City of Richmond purchased the building to save it from destruction. In 1986, the windows and doors were boarded and in 1988 the Urban Enterprise Association of Richmond, Wayne County purchased the structure for \$43,000.00. The building was winterized and a new roof valued at \$25,000.00 was added.

Listed on the National Historic Register as one of the eleven most endangered landmarks in Indiana in 1996, and the Great American Station Foundation placed the Depot on the most endangered stations list in Feb, 2001.

The building was sold for \$1 to a couple from Indianapolis that intended to renovate and reopen the building. They held ownership for several years and left the building to further deteriorate.

With the help of the City of Richmond and a desire to see the historic building stand, Roger Reichert rescued the building with his private funds and hard work.

Since 2000, new life has resurrected itself in the named “Depot District” of Richmond. The Richmond Furniture Gallery, owned by Roger and Kathy Reichert, was opened after much renovation in 2004. The former Millers Brothers building had sat idle and empty for 33 years. Now it is the hub of activity for the district. With over 50 shops and restaurants along Fort Wayne Ave and North E Streets, the renovated Depot will also dance with new business.

Seven partners who currently own and operate Roscoe’s Coffee Bar and Tap Room have plans to open a companion business in the Depot.

The pub will be called the Depot-House of Brews, featuring craft beer taps and food produced in Indiana. Craig Gareiss, from Centerville, will serve as chef. Food will be locally sourced with farm produced beef, pork and vegetables offered. It will also feature over 50 crafted beers and Indiana wines at the wine bar. The wine bar will be located in the baggage building. The second floor of the Depot will accommodate 499 people and an apparel store and gift shop called PAX will welcome visitors on the first floor.

There will be an outside patio.

(Palladium Item article of 6/22/14)



Palladium Item Photo June 16, 2014

Membership Contributors

The following alumni and non alumni have contributed to membership or a donation to the office fund since March 1st, 2014 until August 1st, 2014.

MEMBERSHIP DONATIONS

Our Morton Alumni Members

Adrian Minnick	1934
Cynthia Clark Corsi	1935
Elizabeth Silig Brown	1936
Ruth E Schneider McKinnis	1936
Mary Jane Foreman Bullerdick	1937
James Willis Clark	1937
Mary Eikemeyer Brinker	1938
Ray K Chalfant Jr	1938
Frances Mayer	1939
Lillian Aubin Mendenhall	1939
Rosemond Lahman Murphy	1939
Ruby Harrell Wood	1939

Our RHS Alumni Members ~ 1940's

Marion J Burg	1940
Clarice Stegal Clouser	1940
Maurice L Clouser	1940
Florence Weidner Lawson	1940
Robert Smith Morency	1940
Mildred E Decker Ryan	1940
George J Wessel	1940
Barbara J Quick	1941
Gerald M Clemens	1942
Julia Okel Hamilton	1942
Franklin Kanost	1942
Doris F Stadelman King	1942
Rex Slick	1942
June Darland Slick	1942
Marilyn Schuerman Young	1942
Vivian Freeman Younts	1942
R Noah Berry	1943
Ellen Louise Mann Guthrie	1943
Ruth L Ridge Krupa	1943
Keith Castelluccio	1944
Ruth E Conolly Hoover	1944
Barbara Duvall Kanost	1944
William L Kutter	1944
Carolyn Lybrook	1944
Betty Lou McQueen Monroe	1944
Delight Dilks Sperling	1944
Phylles Quaglio Trammell	1944
Roy H Blomeyer	1945
Dale Duvall	1945
Donald L Mikesell	1945
Stella Blainas Brown	1946
Patricia Bailey Maddock	1946
Stanley O Ross	1946
Nancy Cutter Turula	1946
Henry Werner	1946
James A Adams	1947
Marilyn Cordell Adams	1947
Mary E Bulach Bertsch	1947
William Bentley Borden	1947
Clare L Mayer Dant	1947
Barbara J Hilling Frueauf	1947
Charles H Hodson	1947
John T Lybarger	1947
Mildred F Juerling Phelps	1947
Nancy Shelly Schaenen	1947
Marianne Gomez Sutton	1947
Donna Ryan Turner	1947
Paul W Armbruster	1948

Our RHS Alumni Members ~ 1940's

Marjorie McCoy Conder	1948
Robert E Finley	1948
Betty Throckmorton Huneryager	1948
Barbara Vossler Lybarger	1948
Dudley L Moore	1948
Robert C Myers	1948
Mary L Potter Roberson	1948
Norma J Bailey Shinness	1948
David L Stevenson	1948
Joanna Sue Sharp Stevenson	1948
Louise Milligan Storm	1948
James O Thomas	1948
James J Vogelgesang	1948
Norman D Van Voorhis	1948
Genevieve C Wood Weller	1948
Florence Campbell Burton	1949
Carla Lohman Castelluccio	1949
Fran Martin Jr	1949
Ron M Rogers	1949
Don Ross	1949
David Sherrick	1949
Winifred A Timins Weiss	1949
Colleen Blickwedel Werner	1949

Our RHS Alumni Members ~ 1950's

Jo Ann Calbeck Bond	1950
Mary Byrum Clark	1950
James Cronin	1950
Martha Luerman Dickman	1950
Jack Cartwright	1950
Ruth Ann Hennigear Martin Jr	1950
Marna Ashman Moorehead	1950
Norman F Schwemberger	1950
Evelyn M Wilson Smith	1950
Pat L Chasteen Trocano	1950
Herman D Fluelynn	1951
Harry Hennigar Jr	1951
Carroll G Kinsinger	1951
Beverly Sauer Klute	1951
Dick Opel	1951
Joan C Porter Peterson	1951
Maryann Denning Rogan	1951
George Sax	1951
Marge A Mercurio Borros	1952
Joyce Wright Bostick	1952
Norma Cole	1952
Nancy Dickey Cooper	1952
Jack Edwards	1952
Barbara Reimer Edwards	1952
Alvin R Karn	1952
Marcia Roemer Kinsinger	1952
Carmen Keefer Lawrence	1952
Linda Lane Bowker Logue	1952
William H Logue	1952
Sylvia Morton Pickens	1952
Raquel Ravinet Scotten	1952
Mary DeMeo Vogelgesang	1952
Glenn R Bostick	1953
Bernard W Byrum	1953
Frank W Deardorff	1953
Marilyn Foltz Grotendick	1953
Emory D Jeffers	1953

Our RHS Alumni Members ~ 1950's

Jeannine Elstro Miller	1953
Robert F Morgenroth	1953
Jerald Ozbun	1953
Paul W Smith	1953
Ronald H Smith	1953
Donald C Trotter	1953
Doris Ann German Wessel	1953
Merrill K Bowen	1954
Carol Foley Cartwright	1954
Geraldine R Koehring Chiles	1954
Suzanne Hackman Clark	1954
Judith A Lehw Clements	1954
Beverlee Fritz Deardorff	1954
Richard D Klemann	1954
Thomas McKee	1954
Betty Lou Danelis McKee	1954
Bob Mills	1954
Charlotte Sweet Morstad	1954
Eleanor McManus Oberle	1954
Robert L Pardieck	1954
Alan Tom Roper	1954
Nancy Elliott Schwemberger	1954
Carolyn McGrew Smith	1954
Duane A Wyatt	1954
Jane E Schwemberger Wyatt	1954
Richard E Ammon Jr	1955
Joyce Conarro Byrum	1955
Carol Hamilton Evans	1955
Philip R Hirschfeld	1955
Robert F Hughes	1955
Marge Behrman Kitterman	1955
Carol Ladd	1955
Robert Minor	1955
Phyllis k Cheesman Pardieck	1955
Larry R Reid	1955
Thomas E Weaver	1955
Donald E Atkins	1956
David S Carter	1956
Kim Cornelius	1956
Nancy Heiger Dailey	1956
Charlotte Coyle Haustetter	1956
Richard A Hieger	1956
John L Hitch	1956
Philip L Houston	1956
Joyce Mills McLear	1956
Robert McLear	1956
Janet Flaughner Ozbun	1956
Duane A Roland	1956
Alice Wynegar Schultz	1956
Sonia Sewell Spencer	1956
Sue Puthoff Tell	1956
Mary Louise McQuiston Wade	1956
Jerry J Dils	1957
David Gossett	1957
William F Grotendick	1957
Joyce Zimmer Hanson	1957
Betty C Spalding Hendrix	1957
Janice Tait Hirschfeld	1957
Marietta Klapper Hollingsworth	1957
Jack L Mendelson	1957
John M Parshall	1957
Lois George Pye	1957

Memberships

The following alumni and non alumni have contributed to membership or a donation to the office fund since March 1st, 2014 until August 1st, 2014.

MEMBERSHIP DONATIONS

Our RHS Alumni Members ~ 1950's

Inda L Reeves	1957
Judy Riggleman Roland	1957
Joyce C Witte Studebaker	1957
Sandra S Emrick Smittkamp	1957
Gloria Horne Smith	1957
Jerry A Wolfe	1957
William L Austerman	1958
James R Beckman	1958
Teresa Matson Braun	1958
Janice Hildreth Carter	1958
E J Devers	1958
Richard Edwards	1958
Barclay Erk	1958
Carol Dillman Goar	1958
Richard Edwards	1958
Jerre J Kennedy	1958
Richard Lehman	1958
Judith A Christ McKay	1958
Sharon Tuttle Mills	1958
Max Moss	1958
Shirley Zwissler Nelson	1958
John Nelson	1958
David Nixon	1958
Douglas Oler	1958
Brenda Beach Oler	1958
Alice Jones Rees	1958
Carolyn S Treasurer Stampler	1958
Judy Thomas Blankinship	1959
Frederick A Bragg	1959
Edward J Brown	1959
Frieda A Newton Butt	1959
Harry W Chenoweth	1959
Bunny Sue Ahaus Fielder	1959
Nancy Lee Crandall Frazer	1959
Mary L Tomlinson Herkenhine	1959
James A Hotopp	1959
Carol L Truitt Jeffers	1959
Bill Ninde	1959
Julia Soper Pegg	1959
Elaine Reis	1959
Dorothy Wiggs Smoker	1959
Mary E Lawler Shoemaker	1959
John Stanley	1959
David Stidham	1959
Carla Coble Stidham	1959
John H Sweet	1959

Our RHS Alumni Members ~ 1960's

Brian D Blue	1960
Janet Belt Breedlove	1960
Donna D Daggett Culler	1960
Rebecca Martin Edmonds	1960
Thomas S Everett	1960
David E Fryman	1960
Suzanne Clark Fryman	1960
David L Hart	1960
Judith D Manlove Hazelton	1960
Winifred Meuser Jenkins	1960
Ken Jordan	1960
Phyllis G Golay Littmann	1960
W Kay Ryan Karn	1960
James M Keeler	1960

Our RHS Alumni Members ~ 1960's

Theodore R Lee	1960
Beverly Dunn Lee	1960
Marvin M Maule	1960
Paula Creason Minor	1960
Fay E Duke Minton	1960
Dallas Pegg	1960
Paula A Flatter Raper	1960
Barb Backmeyer Slattery-Crain	1960
Linda Logan Stanley	1960
William H Steinbrink	1960
Betsy Allen Steinbrink	1960
Darlene Shields Trotter	1960
J Kay Timmons Tormey	1960
Rita Nitzscher Wildman	1960
James Wilson	1960
Crosey M Deiser Wise	1960
Gretchen S Frisch Brown	1961
Joe Clements	1961
June Tolliver Clements	1961
Doris Hapner Decker	1961
Jim Harter	1961
Patrick R Jenkins	1961
Ann Van Pelt Judge	1961
Herbert Kaeuper	1961
James Kennedy	1961
Rebecca Horton Kennedy	1961
James P Lawler	1961
Pam Fedlhaus-Mills	1961
Merrily McKinley Moss	1961
Paul Paradiso	1961
Sherry Petry	1961
Mary Kay Brenizer Rench	1961
Ellen Sells Tate	1961
Joyce Wolfe Wilhelm	1961
Susie Wright Wilson	1961
Judith Addison Bryce	1962
Max Close	1962
Mary Beth Brooks Dinardo	1962
Judith Shively Fitz	1962
William S Fleming	1962
Evelyn Eastman Harter	1962
Darlene Hodge Keelor	1962
Judith A Schuerman Klemann	1962
Carol Kleinknecht McCleary	1962
Jean Newhouse	1962
Nancy N Best	1963
Thomas E Bricker	1963
Diane Wissel Colaizzi	1963
Woody Coyle	1963
Christie Lingle Close	1963
Kay Fleisch Emmons	1963
Marilyn Shears Fancher	1963
Dianne Duncan Mansfield	1963
James T Porter	1963
Jane Ann Simpson Porter	1963
James L Puckett	1963
Rich E Boston	1964
Judith Petro Chaney	1964
John Eggemeyer	1964
Linda Gennett Irmscher	1964
Jill Fritz Kaeuper	1964
Timothey J Kauper	1964
Nancy C Tuttle McGill	1964

Our RHS Alumni Members ~ 1960's

Karen S Reece Needler	1964
Jerry D Newman	1964
Carl A Osborne	1964
Marcia Carter Reineking	1964
Mila Placke Serve'	1964
Jane Mendenhall Sowers	1964
Robert J Younts	1964
Richard Alexander	1965
Michael Conti	1965
Susan Bayer Conti	1965
Jane Anne McGill Dunham	1965
Julie F Corsi Homyak	1965
Jane C Kinyon	1965
Sidney Gerald Lakes	1965
Janet B Blossom Lussier	1965
Nancy Wright Manning	1965
Michael Matthews	1965
Sherry Stevens Mendenhall	1965
Mary E Keen Raymond	1965
Gary W Wiggans	1965
Karen Eggemeyer Brown	1966
Sharon K Younts Burtch	1966
Stephen M Fulton	1966
Dale J Gerken	1966
Nancy E Gossett	1966
Cathy A Jones Keipert	1966
R Mark Phillips	1966
Richard D Mendenhall	1966
Edward L Miller	1966
Timothy P Sherrow	1966
Elaine Tiernan	1966
John M Effmann	1967
Jane Harlan Gasch	1967
Annette Cahoon Greene	1967
Gary L Kreider	1967
Patricia Creason Rigsby	1967
Albert D Strunk	1967
Janet Hackman Phillips	1967
Gwendlyn A Schroeder	1967
Donald Simkin	1967
Nancy Hilbert Beaman	1968
C Tiothy Brokamp	1968
Amy Vosmeier deChicchis	1968
Rosemary E Piper Coffman	1968
Karolyn Hayes Edwards	1968
Larry Edwards	1968
Jennie Gabbard Poole-Gausmann	1968
David E Goins	1968
Jerry D Rench	1968
Jim Richwine	1968
Linda Sizemore Sheets	1968
Linda Washburn Simkin	1968
Linda E Lamb Sittloh	1968
Joseph C Bates	1969
Mary Louise Beede Bates	1969
Ron J Brinker	1969
Kathy E Hays	1969
Philip C Kauper	1969
Kenneth M Love	1969
Curtis H Marsh	1969
Dennis W McMahan	1969
Merry Lee Oliver Monroe	1969

Membership Contributors

The following alumni and non alumni have contributed to membership or a donation to the office fund since March 1st, 2014 until August 1st, 2014.

MEMBERSHIP DONATIONS

Our RHS Alumni Members ~ 1960's

Debbie Hardman Ninde	1969
Rebecca M North	1969
Ronald L Sheets	1969
John Thistlthwaite	1969
Rosellyn Tapp Welch	1969
Doug Woolley	1969

Our RHS Alumni Members ~ 1970's

Martha J Philhouwer Dafnos	1970
Mary Ellen Cordell Donat	1970
Debbie Collins Ford	1970
Susan Sauer Geesa	1970
Alan L Koncz	1970
Dennis G Lydick	1970
Robert A Wilson	1970
Perry Wise	1970
Robert Bever	1971
Ann Klute Brinker	1971
Michael Brinker	1971
Linda Carroll Burbridge	1971
Michael D Hachey	1971
Jill Brown Lorden	1971
Kevin McClure	1971
Dennis Turner	1971
Rae Wohlhueter Maier	1972
Beth Wiechman Schilling	1972
Aleasia White Stewart	1972
Jackie Beach Barnes	1973
Annette Carnes Brinker	1973
Randy Bryant	1973
Debbie Collier Bryant	1973
Julianne Holmes Cochran	1973
Marc Jaffe	1973
Jane Mikesell Love	1973
Lynda L Lydick	1973
David E Rexrode	1973
Cathleen Foster Turner	1974
Joe Carroll	1975
Rebecca Hoff Jaffe	1975
Amy Glaser Jantzen	1975
Jill Toschlog Powell	1975
Robert C Bartlemy	1976
Julia Caudle Charlton	1976
Robin Henry	1977
William J Kitchin	1977
Carolyn Boone Panagopoulos	1977
Rhonda Dees Cillian	1978
Mary Ellen Opel Roberts	1978
Traci Klute Weaver	1978
Carol Daggy Pennock	1979
John Rod Weiss	1979
John A Wolfe	1979

Our RHS Alumni Members ~ 1980's

Amy Chiles Bever	1980
Pricia Beane Ferreira	1980
Dean A Hill	1980
Deborah L Benton Kitchin	1980
Richard Peterson	1980
Cindy Opel Roach	1980

Our RHS Alumni Members ~ 1980's

Ronald A Seaney	1980
James R Smarelli	1980
Kelly Hitch Basso	1981
Susan Witte Mahoney	1982
Elizabeth King Saylor	1982
Malissa Duckett Matchette	1983
Shannon Hitch	1985
Douglas Opel	1985
Julie Bennett	1986
Amy Price Terry	1986
Ann C Wettig	1987
Matthew R Vaughn	1988
Marc Johnson	1990
Celeste Amburgy Johnson	1994
Millicent R Martin Emery	1996

Our RHS Non Members Supporters

Elsie Klute

Membership of \$50- \$99 Donations

Rose M Petty Bailey	1943
Betsy Turner Beasley	1947
Don E Moore	1950
Jon Igelman	1951
Henry Christmon	1953
Darrel Alvey	1954
Pete Long	1954
Marilee Jackson Thomas	1954
Ruth Whaley Waugh	1954
Robert C Thomas	1955
Charles Smith	1956
Marsha Placke Smith	1956
Dana Black Alvey	1957
Marilyn Kelley Dowdell	1957
Aileen Hamilton Wickett-Harris	1957
P Michael Hoch	1957
Verl Lantz	1957
Sue Ann Keenan Hoch	1958
Harry Duke Chenoweth	1959
Gary D Force	1959
Peggy Habing Nicholson	1959
Fran Chagares Tomassetti	1959
Kenneth Buske	1960
Tom Everett	1960
Sandra Marine Force	1960
David E Fryman	1960
Bonnie Godsey McClain	1960
Paula Ann Flatter Raper	1960
Duane Hodgins	1962
Dottie Clackum Toney	1962
Sandra Armacost Hodgins	1963
Tala Smock Meyer	1964
Vicki Hamilton Wilson	1964
Marinee Fannin Green	1967
Marinelle Fannin Green	1967
Michael S Williams	1967
Linda Heid Shepherd	1968
Jim Higgs	1969
Robert Tom Beck	1971
Peggy Sherer	1972

Membership of \$50- \$99 Donations

Marc Jaffe	1973
Sheryl Krall Terini	1974
Rebecca Gooding Jaffe	1975
Heidi Wuertemberger Thurston	1978
John A Wolfe	1979
Michael A Fox	1980
Andrew J Bailey	1987
Jane Taube Niccum	1988
Adam G Forrest	1993

Our RHS Non Members Supporters— \$50 to \$99

Ronda Christopher	Non
Joan Lawrence	Non

Membership of \$100—\$500 Donations

Wayne Stidham	1934
Paul G Wieseahn	1937
John K Merrell	1945
Robert E Byrket	1948
Carl E Wilson	1949
Larry Crockett	1950
P Michael Hoch	1957
J Allen Schuerman	1957
John C Holder	1958
Patricia Corsi	1959
Robert Jefferies Jr	1959
Patricia Kanke Farmer	1960
W LeRoy Robbins	1960
Bonnie McClelland Sampsell	1960
Joan McKee Warren	1960
Sharon Sanders	1963
Mila Placke Serve'	1964
Dan Burdett	1966
Ann McKee Coffin	1966
Barbara A Scott	1966
Stephen H Haas	1967
Sharon Githens Enright	1969
Curtis H Marsh	1969
Beth Wiechman Schilling	1972
Terry Warfield	1972
Thomas L Brown	1974
Sheryl A Krall Terzini	1974
Cheri Williams Jetmore	1975
Larry Blanford	1977
Millicent Martin Emery	1996

Our RHS Non Members Supporters \$100—\$500 Donations

J M Hutton Inc	NON
----------------	-----

Membership of \$500 & Up Donations

Esther Sunderland	1948
Roy Ridge	1955

If you would like to become a member, please see the membership form on page four. You can also sponsor a family member or friend's membership as a thoughtful gift.

Scholarship Donations

The following alumni and non alumni have contributed to the scholarship fund
March 1st, 2014 until August 1st, 2014.

Our Morton Members—Up to \$50

Ruth E Schneider McKinnis	1936
Doris F Stadelman King	1942
Rex Slick	1942
June Darland Slick	1942
Vivian Freeman Younts	1942
Nancy Cutter Turula	1946
Charles H Hodson	1947
John T Lybarger	1947
Marianne Gomez Sutton	1947
Barbara Vossler Lybarger	1948
Louise Milligan Storm	1948
Class of 1949	1949
Frank J Martin Jr	1949
Ruth Ann Hennigar Martin	1949
Pat Chasteen Trocano	1950
Beverly Sauer Klute	1951
Joan C Porter Peterson	1951
Linda Lane Bowker Logue	1952
William H Logue	1952
Bernard W Byrum	1953
Frank W Deardorff	1953
Marilyn Fotz Grotendick	1953
Jeannine Elstro Miller	1953
Beverlee Fritz Deardorff	1954
Richard D Klemann	1954
Robert L Pardieck	1954
Alan Tom Roper	1954
Joyce Conarro Byrum	1955
Carol Hamilton Evans	1955
Phyllis K Cheesman Pardieck	1955
David S Carter	1956
Kim Cornelius	1956
Sonia Sewell Spencer	1956
Mary Louise McQuiston Wade	1956
Lois George Pye	1957
William F Grotendick	1957
Janice Hildreth Carter	1958
Richard Lehman	1958
Frederick A Bragg	1959
Elaine Reis	1959
John Stanley	1959
Rebecca Martin Edmonds	1960
Ken Jordan	1960
William H Steinbrink	1960
Betsy Allen Steinbrink	1960
Marvin M Maule	1960
Paula Flatter Raper	1960
Linda Logan Stanley	1960
Jim Harter	1961
Herbert Kaeuper	1961
James P Lawler	1961
Lynn Roff Osborne	1961
Judith Addison Bryce	1962
Evelyn Eastman Harter	1962
Judi Schuerman Klemann	1962
Lynn Roff Osborne	1962
Nancy N Best	1963
Marilyn Shears Fancher	1963
Jill Fritz Kaeuper	1964
Carol A Osborne	1964
Michael P Conti	1965
Susan Bayer Conti	1965
Sidney Gerald Lakes	1965

Scholarship donations—Up to \$50

Elaine Tiernan	1966
John M Effmann	1967
Gary L Kreider	1967
Nancy Hilbert Beaman	1968
Larry D Edwards	1968
Jennie Gabbard Poole-Gausmann	1968
Merry Lee Oliver Monroe	1969
Robert A Wilson	1970
Perry Wise	1970
Michael D Hachey	1971
Jill Brown Lorden	1971
Marc Jaffe	1973
David E Rexrode	1973
Joe Carroll	1975
Rebecca Hoff Jaffe	1975
Amy Glaser Jantzen	1975
William J Kithcin	1977
Carolyn Boone Panagopoulos	1977
Carol Daggy Pennock	1979
Jody Mendenhall Wise	1979
Deborah L Benton Kitchin	1980
Ronald A Seaney	1980
Marc Johnson	1990
Celeste Amburgey Johnson	1994

Scholarship donations—\$50 to \$99

Franklin Kanost	1942
Rex Slick	1942
June Darland Slick	1942
Barbara Duvall Kanost	1944
Nancy Shelly Schaenen	1947
Betsy Turner Beasley	1947
William Bentley Borden	1947
Norman Bailey Shinness	1948
Jon Igelman	1951
Marilyn Fotz Grotendick	1953
Donald C Trotter	1953
Suzanne Hackman Clark	1954
R Pete Long	1954
Marilee Jackson Thomas	1954
Ruth A Whaley Waugh	1954
Richard E Ammon Jr	1955
Robert C Thomas	1955
William F Grotendick	1957
Joyce Zimmer Hanson	1957
Aileen Hamilton Wickett-Harris	1957
Marietta Hollingsworth Klapper	1957
Harry Duke Chenoweth	1958
Sue Ann Keenan Hoch	1958
Gary D Force	1959
Peggy Habing Nicholson	1959
David Stidham	1959
Carla Coble Stidham	1959
Janet S Belt Breedlove	1960
Kenneth Buske	1960
Sandra Marine Force	1960
David L Hart	1960
Ken Jordan	1960
Bonnie Godsey McClain	1960
William H Steinbrink	1960
Betsy Allen Steinbrink	1960
Darlene Shields Trotter	1960
Susie Wright Wilson	1961

Scholarship donations—\$50 to \$99

Thomas Herrman	1964
Dale J Gerkin	1966
Nancy E Gossett	1966
Michael S Williams	1967
Rae Wohlhuetr Maier	1972
Nancy Hilbert Beaman	1968
Amy Vosmeier deChicchis	1968
Jerry D Rench	1968
Ron J Brinker	1969
Susan Sauer Geesa	1970
Ann M Klute Brinker	1971
Rae Wohlhueter Maier	1972
Peggy Sherer	1972
Aleasia White Stewart	1972
Randy Bryant	1973
Debbie Collier Bryant	1973
Traci Klute Weaver	1978
James R Smarelli	1980
Malissa Duckett Matchette	1983
Matthew R Vaughn	1988

Scholarship donations—\$50—\$99—

Non Members

Joan Lawrence

Scholarship donations—\$100—\$499

Wayne Stidham	1934
Paul G Wiesehahn	1937
Carl E Wilson	1949
Larry Crockett	1950
Carol Markley Ladd	1955
Verl Lantz	1957
P Michael Hoch	1957
Dward J Brown	1959
Peggy Habing Nicholson	1959
Mary E Lawler Shoemaker	1959
Tom S Everett	1960
Paula Ann Flatter Raper	1960
W LeRoy Robbins	1960
Barbara Backmeyer Slattery-Crain	1960
Paul Paradiso	1961
Richard E Boston	1964
Karen Reece Needler	1964
Richard Alexander	1965
Barbara Scott	1966
Jim Richwine	1968
Sharon G Githens Enright	1969
Curtis H Marsh	1969
Dennis G Lydick	1970
Linda Carroll Burbridge	1971
Beth Wiechman Schilling	1972
Thomas L Brown	1974
Sheryl Krall Terzini	1974
Larry Blanford	1977
John A Wolfe	1979

Scholarship donations—\$500 & Up

John K Merrell	1945
Ralph Miller	1945
Bill Mercurio	1958
Bonnie McClelland Sampsell	1960
John Eggemeyer	1964

Scholarship donations—\$500 & Up—

Non Members Mary Lou Griffey

Tid-bits

The information here is just a random collection of fact and figures we thought you might enjoy.
It explains how we “got this way”

Who’s the biggest Class at RHS?

Often we are asked who holds the record for the largest graduating class. According to our data base, here is what we find; The Class of 1966 had 878 graduates making it the largest. The class of 1973 is second with 741, third is 1965 with 715, class of 1971 was 713 and 1972 was 702. In comparison to the “baby boomers” the class of 2014 at RHS numbered 360.

What was the Worst Year in Sports for Richmond?

Review of the Pierian and Register newspapers find that the worst performance was in 1929. The track team did not win any of their five meets. The football team played seven games and only won one. But the sad thing is that they didn’t score a point in four of the games. And the baseball team had 14 games that summer. They only won four. Two were rained out

This years teams– much better record. Football– NCC Champs with 8-0, basketball NCC Champs with 8-0, and baseball 22-8.

Which class lost the most soldiers in Vietnam?

The class of 1963. Jon David Vannetta was KIA in Vietnam 8/18/1965. Terry Hines was KIA in Vietnam 7/19/1967. Terry was King of the Y –Teen Dance, was a member of Student Council, Hi-Y, R Club, Dance Club, Wrestling team, football team, baseball team and belonged to the Future Teachers Club.

Who started the art classes in Richmond Schools?

Marcus Mote, (artist who created the portrait of Daniel Reed which has hung in Reid Hospital, was responsible for encouraging Richmond Schools to include drawing in the curriculum eight years before mandated by the state of Indiana as a class. He also painted a portrait of John Quincy Adams and a locally well known painting of Hawkins Mill in Glen Miller Park. (the mill was also painted by Micajah Nordyke)

When did we become Devils?

Prior to 1924, the Richmond team was know as the “Red & White”. In 1924, at tournament time, the news stories began referring to the team as “the Red Devils”. Joe DiFederico, '24 and Findley Bond, '24, first appeared in costumes and performed on the floor at half time . Bond, a swimmer and acrobatic performer and DiFederico (of the Lamppost Restaurant) who was a gymnast as well, had a difficult time with the long tails on the devil borrowed costumes. John Rizio, Class of 1924 as well, relayed this story to the Palladium in 1972.

When did football start at RHS?

As early as 1890 foot-ball was played in high schools but soon disbanded due to high incidents of injuries. The first foot-ball games in Richmond were organized in 1898 by Walter E Bundy between Earlham, Dayton, Winchester and Indianapolis. The first game was Oct 22 Indianapolis High School. Three games followed: Nov 12 at Earlham Nov 17 at Dayton, and Nov 24 with Winchester here.

RHS students began playing football in 1909. Rules had been changed to limit injuries. In 1909, football positions included full back, right half, left half, center and linemen.

The first organized RHS team was 1919 with Coach Byron J Rock. Lt Rock came to RHS from the Army. He had trained under Livering of Princeton and under Stierm of IU, who was also coached football and basketball at Mankato, Minn where RHS Principal Bate was employed. Principal Bate brought Lt Rock to Richmond to head the school’s science department and coach both foot-ball and track.

Thirty boys tried out for the first team in 1919. The school provided new uniforms.

The first school football game was a loss to Hamilton 32-6 with ll boys playing in the mud and rain.

The second football game was a huge loss for RHS- 139-0 –game was with Stiver. Coach Rock was concerned the boys showed “a lack of nerve at falling on the ball.”

(from a 1919 Register article)

The Richmond Music Festival

Starr Gennett's annual Walk of Fame was expanded this fall to a full weekend of music. RHS Alumni were featured as the RHSAA partnered with other organizations to promote Richmond's rich musical heritage.

Melvyn "Deacon" Jones, '62 and Jeff Hamilton, '71, both of California spoke to the RHS music students on Friday, Sept 12th at McGuire Hall about their love of music. Neither man had ever met the other so the interaction between the two and then the students was moving.

"Get it in writing" was the sage advice from Deacon. "It is not the amount of time you practice but the quality of the practice that will make you a success" came from Hamilton.

Both men performed during the festival: The Jeff Hamilton Trio at Goddard Hall at Earlham on Friday night and The Deacon Jones Blues Band at McGuire Hall on Saturday night. *(Dave Eggan photo supplied)*



Saturday a brunch was held for about forty people at the Olde Richmond Inn. Pictured at left (top) are the Jeff Hamilton Trio of Jeff Hamilton jazz drummer, bassist Christoph Luty and Tamir Hendleman keyboardist and pianist, enjoyed an early lunch before catching their flight back to LA. Jeff stayed in town to attend several more of the concerts.

At left (below) are Deacon Jones with some of his family members including Maurice Clemens, his uncle who helped raise him, three cousins and his fiancé of 15 years, Pam Hill.



Also in attendance were Carol Lou Woodward, former teacher of Hamilton who was honored at the Starr Gennett VIP dinner on Friday, Ralph Burkhardt of Richmond and John & Rea Parshall of Anderson, IN, both former music teachers of the honored guests.

Both men have family here in Richmond so their ties to our community included time to reunite with relatives and former classmates.

Jeff and his trio were sponsored by Earlham College and Deacon and his band were sponsored by Starr Gennett and the Wayne County Tourism Bureau. *(photos by Jim Resh of the Tourism Bureau)*

starr-gennett foundation
presents



A book signing (right) was held for Deacon at the Wayne County Tourism Bureau on Saturday. Mayor Sally Hutton, '67, proclaimed it "Deacon Jones Day". "I think Richmond has a wonderful atmosphere, and I'm so proud to have it as my honorary hometown!" wrote Pam Hill, Deacon's fiancé after returning home. *(Jim Resh, Tourism Bureau photo)*

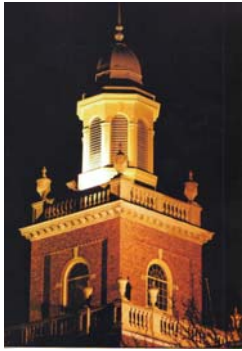


For three days, 28 bands came to the city and performed live music downtown, at Earlham, McGuire Hall, and at the fairgrounds. The goal is to make this an annual event, bringing RHS alumni home to celebrate their talents.



Pictured at left are David Fulton of Richmond, Starr Gennett committee, Jeff Hamilton, and his sister, Ann Hamilton Retz, '62, of Richmond. They attended the final concert of the Tom Daughtery Orchestra in the War Memorial Park on Sunday. *(Bob Jacobson of Starr Gennett photo)*

The Richmond Music Festival (cont)



The official publication of the Richmond High School Alumni Association



Pottery Palusa hosted by the Richmond Art Museum featured live music



Ciera Flory Band downtown



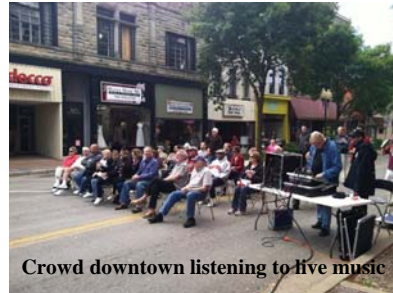
Jeff Hamilton Concert with Carol Lou Woodward at the piano in Goddard Hall, Earlham



Backstage at the Deacon Jones Concert at McGuire Hall



Tom Daughtery Orchestra



Crowd downtown listening to live music



Billboard promoting the week-

A combined effort from many groups created this event. The RHSAA collaborated and promoted Richmond's wealth of talent— past and present.



The final concert was held in the War Memorial Park in the gorge Sunday evening. The crowd enjoyed music, taps and a gun salute.



Manning the sales table in McGuire Hall at the Deacon Jones concert were (l-r) Pam Lawrence Hagy, '76, RHSAA board member, Sarah Wright, '64, retired teacher RHSAA, and former RHSAA Board member, Richmond, Sharon Sanders, '63, RHSAA board president and Mary Lou Griffey, Exec Director.